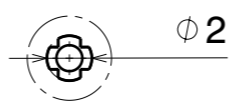
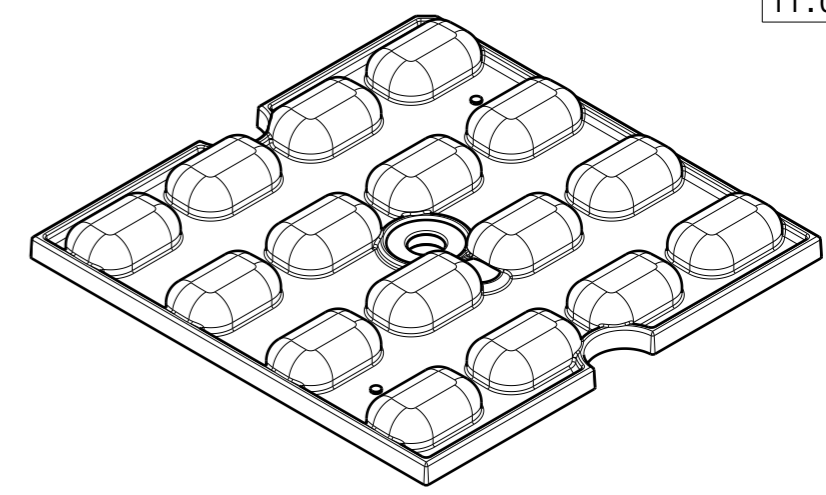


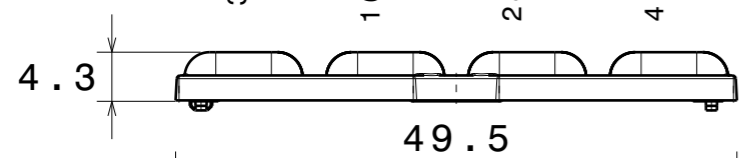
Detail A
Scale: 3:1



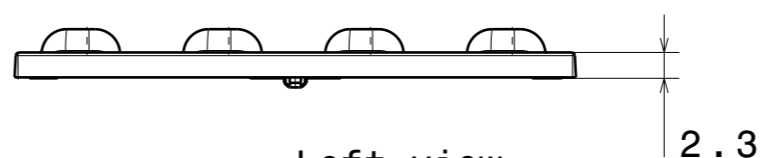
Detail B
Scale: 3:1



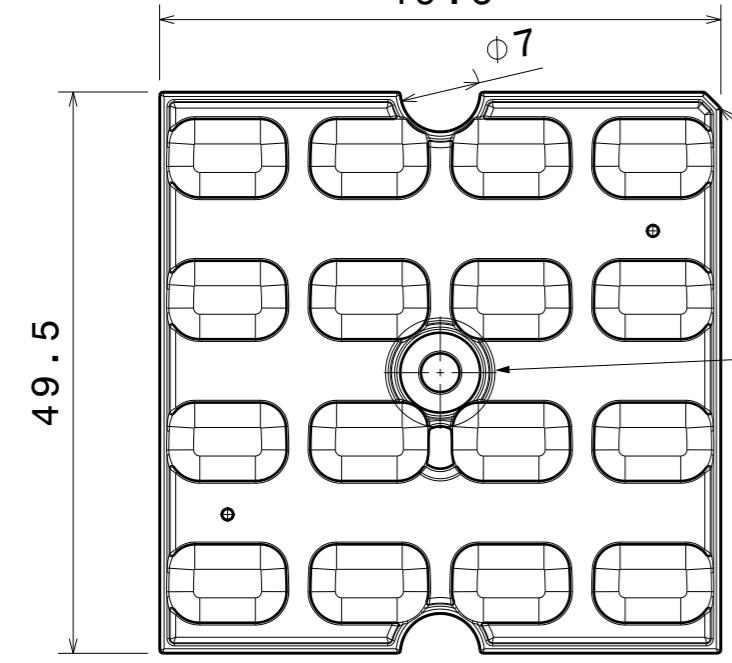
Isometric view
Scale: 3:2



Front view
Scale: 3:2

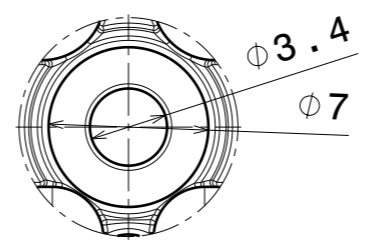


Left view
Scale: 3:2



Cut corner marking
house side

Top view
Scale: 3:2



Detail C
Scale: 3:1

| PART | TYPE | MATERIAL | COLOR / COATING |
|--------------------------|------|----------|-----------------|
| C16220_STRADELLA-16-T1-A | | PMMA | clear |

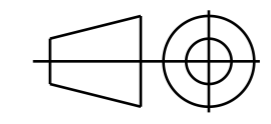
MECHANICAL DRAWING

PRODUCT
STRADELLA



Plastic moulding general tolerances according to DIN 16901-130 and applies if not otherwise shown in the drawing. Silicone moulding general tolerances according to ISO 3302-1 Class M3 and applies if not otherwise shown in the drawing.

FIRST ANGLE PROJECTION:



This drawing is the property of LEDiL Oy. It may not be copied or otherwise distributed without prior written permission from LEDiL Oy.

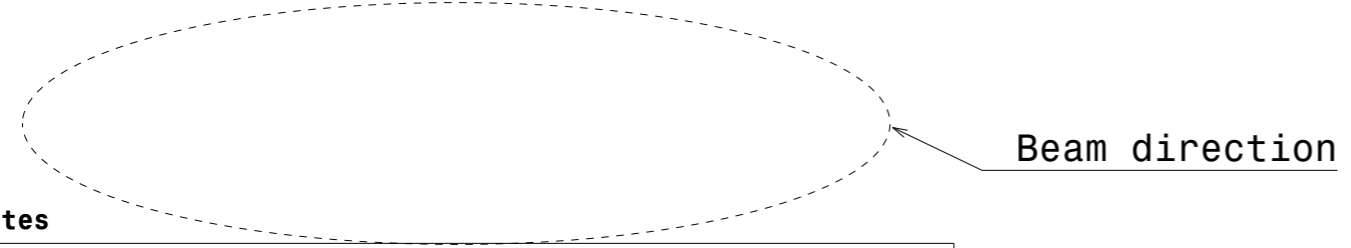
SCALE 3:2

WEIGHT 5,6 g

A3 SHEET 1/1

Notes

| | |
|--|---|
| | PCB or heatsink level. |
| | LED location |
| | Ensure LED fitting from a product specific 3D model available from www.ledil.com |
| | For more details about installation please see LEDiL Installation Guide on www.ledil.com |



Beam direction